

Workforce Innovation – Allied Health Assistants

Sarah Bird

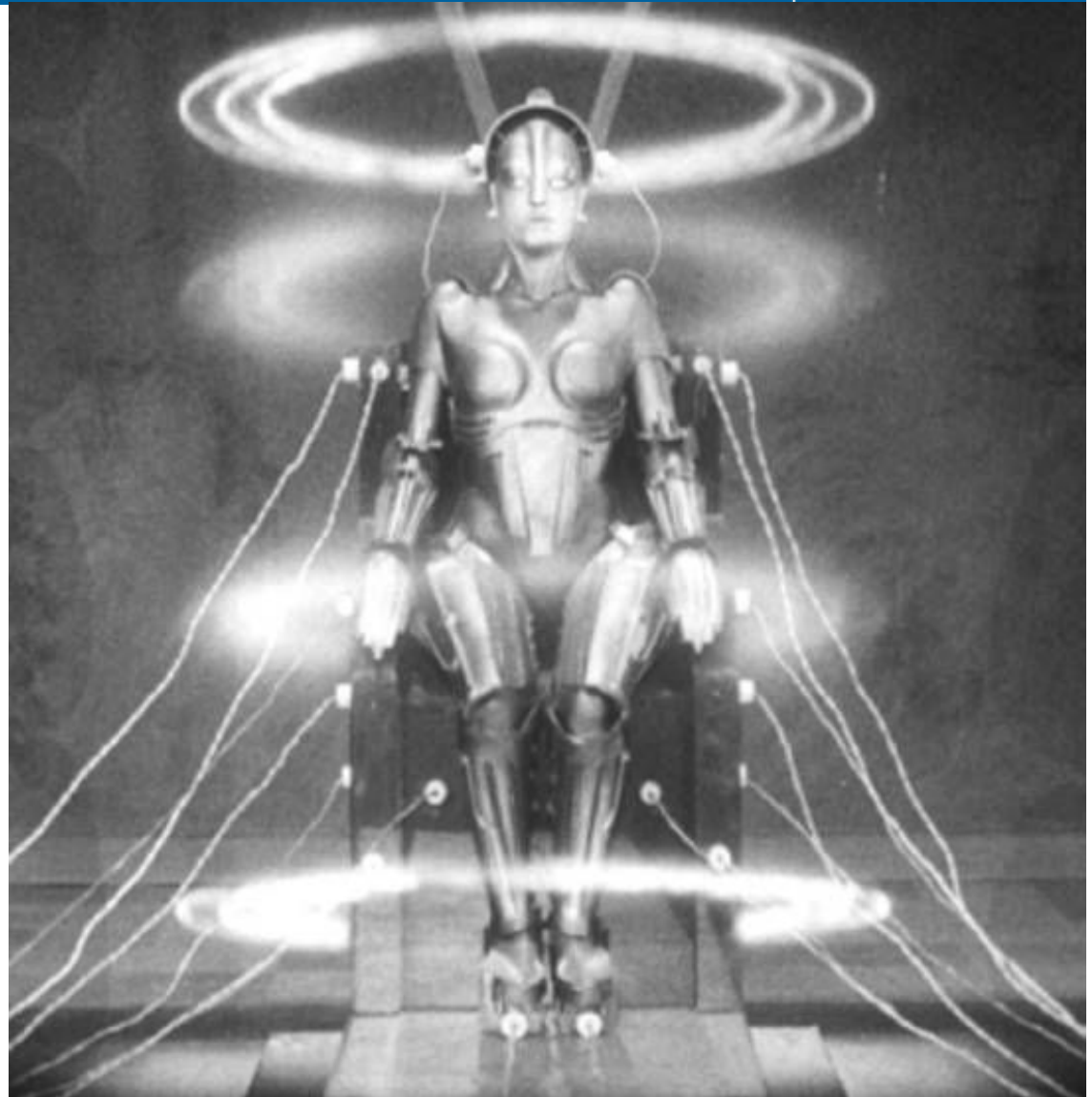
Senior Policy Advisor

Workforce Innovation

Sarah.Bird@health.vic.gov.au

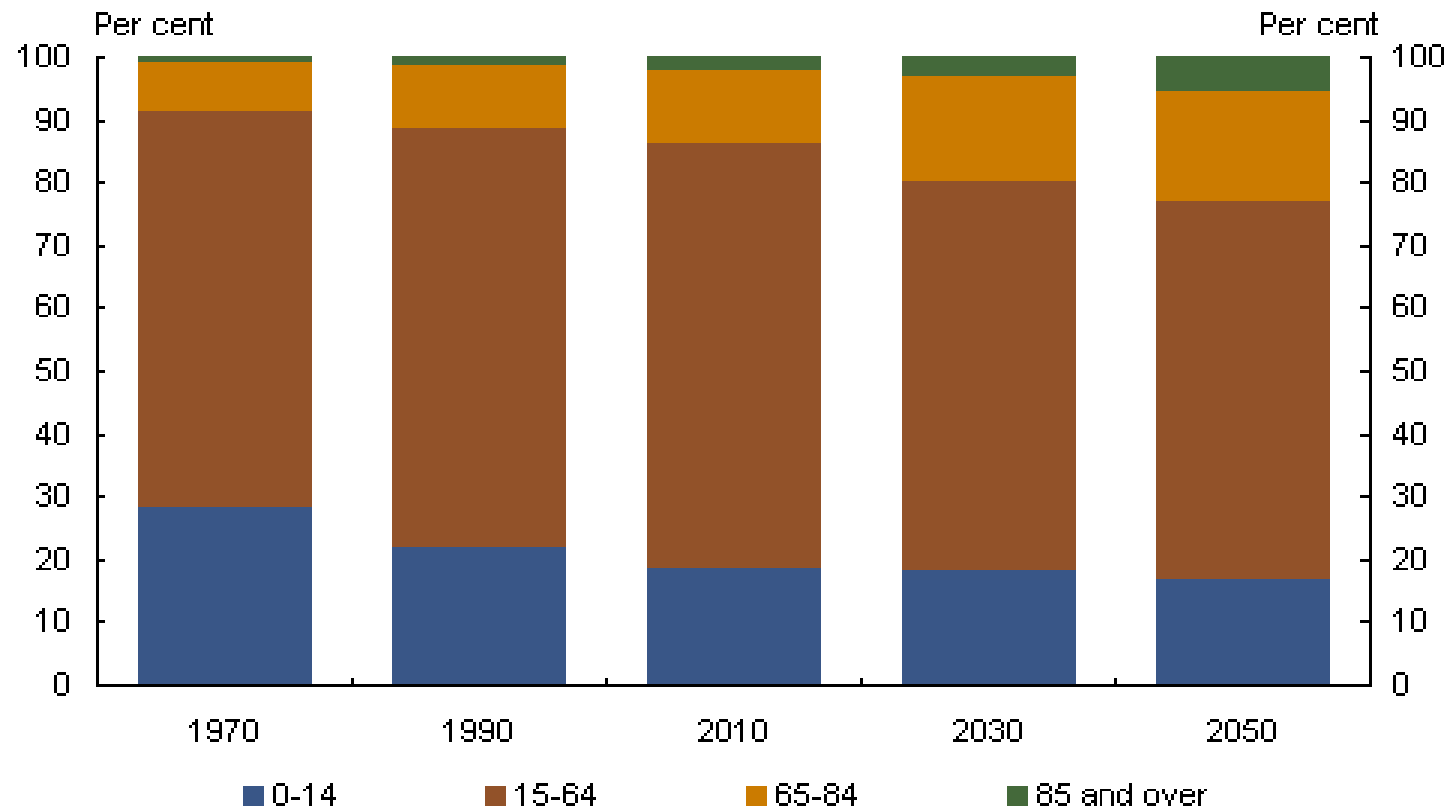
The future will be different

- Ageing population
- Workforce trends
- Burden of chronic disease
- Consumer expectations
- Changes in technology
- System reform
- Rising costs



The population is ageing

Proportion of the Australian population in different age groups



Source: Australia to 2050: Future Challenges - the 2010 Intergenerational Report, Commonwealth of Australia 2010.

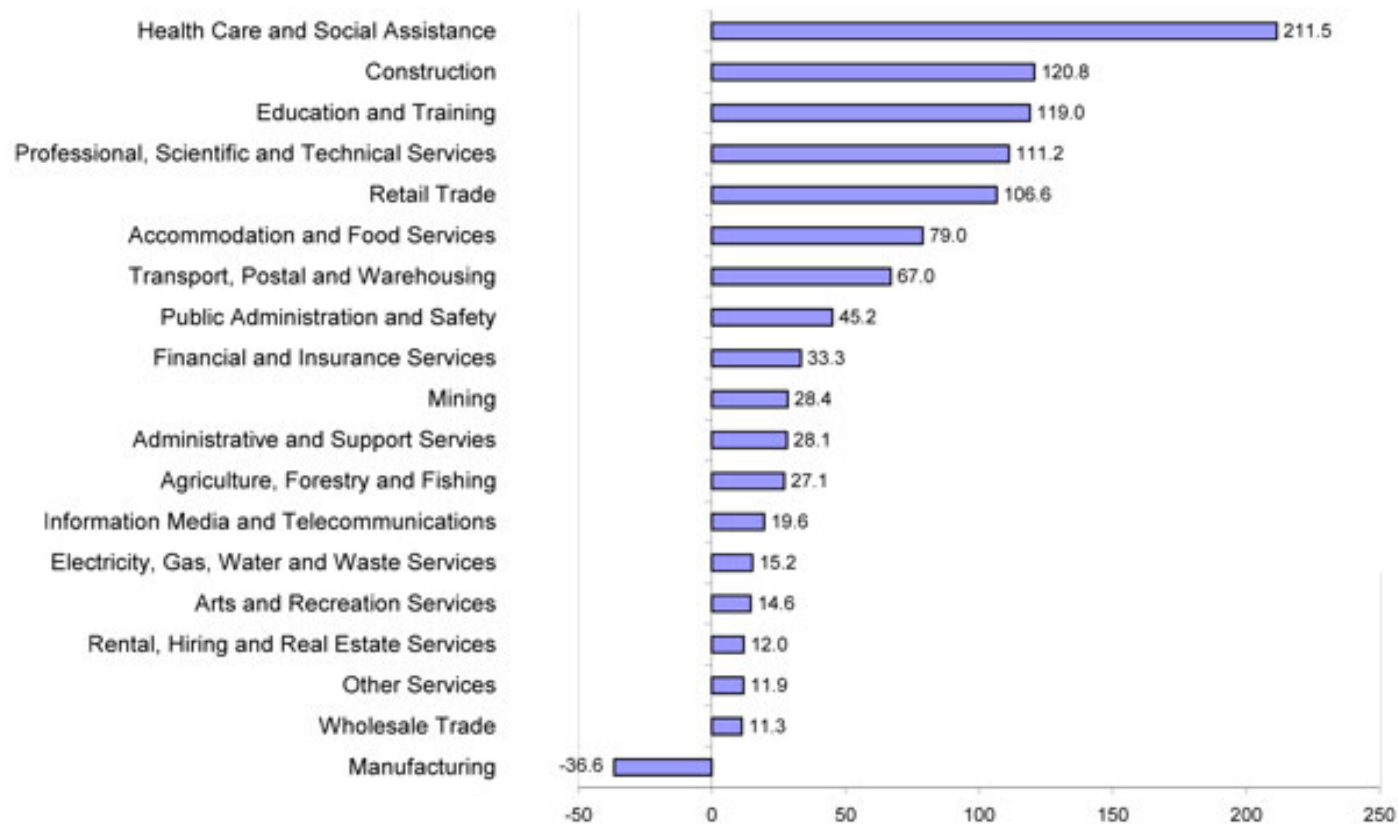
The population is ageing

- In 2010, there was an estimated **5 people** of traditional working age for every person aged 65 and over.
- By 2050, only **2.7 people** of traditional working age are projected for every person aged 65 and over.

Source: Australia to 2050: Future Challenges - the 2010 Intergenerational Report, Commonwealth of Australia 2010.

Projection of demand

A projection of demand sector by sector over the next 5 years in the Australian economy:



Source: The Hon Julia Gillard MP, Speech: Address to Skills Australia, Launch of Australia's Workforce Futures: A National Workforce Development, 5 March, 2010.

How we approach workforce planning



Our response

health

Frank and Ernest



- Piloted AHA Roles
- Workforce Redesign Roadshow
- Partnership Grants
- Training Grants
- Mentoring Grants
- Allied Health Assistant Scoping Project

<http://www.health.vic.gov.au/workforce/allied>

AHA scoping project – strategies

- RAHWorks
- Continuing Professional Development
<http://www.cpdforalliedhealth.org/>
- Mentoring
- CPD subsidies
<http://www.vha.org.au/page/942.html>
- AHA Supervision & Delegation Framework

The following roles and workforce models will be piloted in 2011-12:

- Remote Supervision AHA Workforce Model
- AHA Supported Telehealth care
- AHA in Social Work
- AHA with Occupational Therapy and Continence Management Competencies
- Health Pathways Projects